

Search

Comanche Park Campground

**Site Map**

Black Hills National Forest

**Home**

**Special Places**

**Recreation**

- [Bicycling](#)
- [Camping & Cabins](#)
- [Climbing](#)
- [Fishing](#)
- [Hiking](#)
- [Horse Riding & Camping](#)
- [Hunting](#)
- [Nature Viewing](#)
- [OHV Riding & Camping](#)
- [Outdoor Learning](#)
- [Picnicking](#)
- [Rocks & Minerals](#)
- [Scenic Driving](#)
- [Water Activities](#)
- [Winter Sports](#)
- [Other Activities](#)

- [Alerts & Notices](#)
- [Passes & Permits](#)
- [Maps & Publications](#)
- [Land & Resources Management](#)
- [Learning Center](#)
- [Working Together](#)
- [About the Forest](#)
- [News & Events](#)

**Contact Information**

**US Forest Service**  
**Black Hills National Forest**  
1019 N. 5th Street  
Custer, SD 57730  
605-673-9200

Dial 711 for  
Telecommunications Relay  
Services

**Telecommunications Info**

**Contact Us**

The Comanche Park Campground has 34 sites, but only a few are open during the winter months. This is the closest campground to Jewel Cave.  
[At a Glance](#)

<b>Area Amenities:</b>	Drinking water
<b>Fees</b>	\$14/Night for single unit, \$2/Night for extra vehicle
<b>Open Season:</b>	May
<b>Usage:</b>	Light
<b>Closest Towns:</b>	Custer
<b>Water:</b>	Yes
<b>Restroom:</b>	Toilet
<b>Operated By:</b>	Concessionaire

**General Information**

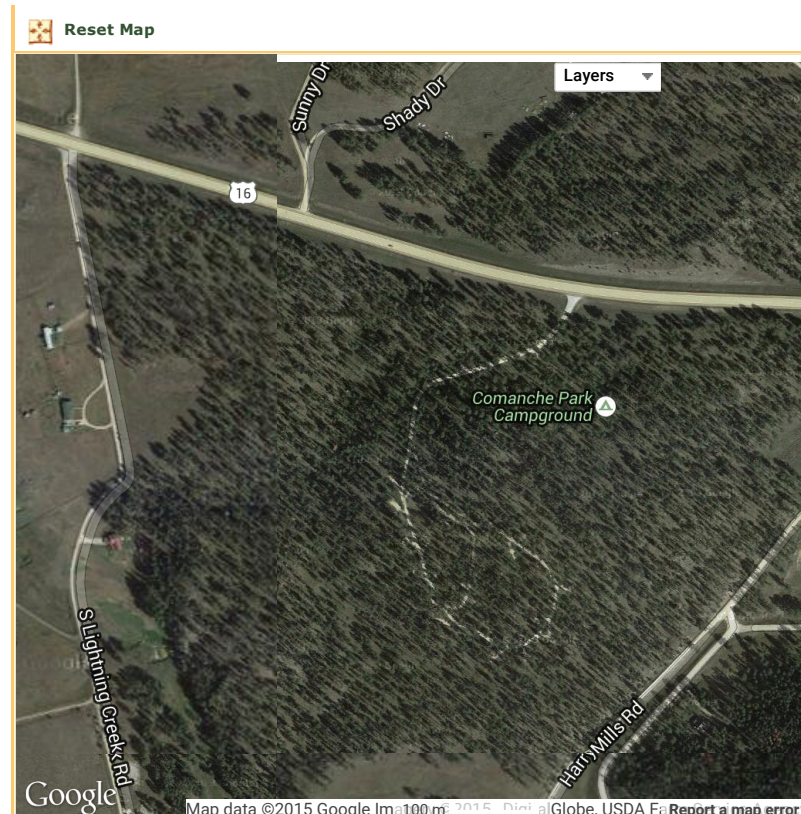
**Directions:**

To access Comanche Park Campground from Custer, travel west on U.S. Highway 16 for approximately 6 miles. The campground is on the south side of the highway.

**Accessibility:**

[Recreation Map](#)

Map showing recreational areas. [Map Information](#)



Map data ©2015 Google, Imagery ©2015 DigitalGlobe, USDA Forest Service

**Activities**

- [Camping & Cabins](#)
- [Campground Camping](#)

**HIDE**



[Current Fire Information](#)

**Alerts & Warnings**

Victoria Lake Road Closed in Two Locations  
North Boat Ramp at Pactola Reservoir Closed  
Some Forest Service Roads to remain closed due to Spring Moisture  
Cook Lake Recreation Area Closed  
Please Use Caution When Entering the Black Elk Wilderness

[View All Forest Alerts ...](#)

**Quick Links**

- [BKNF Campground Overview](#)
- [BKNF Outfitter Guides](#)
- [Reserve a Campsite](#)

**Areas & Activities**

[Find An Area](#)

**Featured Events**

- [August Moon Walk - Geologic Slides a Mile Wide](#)  
Date(s): Aug 29, 2015
- [September Moon Walk - Fire Lookout Towers and Their Keepers](#)  
Date(s): Sep 26, 2015

**Location**

**Latitude :** 43.73459  
**Longitude :** -103.7145318  
**Elevation :** 5100

<b>Reservation Info</b>	This site can be reserved by calling Toll Free 1-877-444-6777 (International 518-885-3639 or TDD 877-833-6777) or on-line at <a href="http://www.recreation.gov/campgroundDetails.do?contractCode=NRSO&amp;parkId=70012&amp;topTabIndex=CampingSpot">http://www.recreation.gov/campgroundDetails.do?contractCode=NRSO&amp;parkId=70012&amp;topTabIndex=CampingSpot</a>
<b>No. of Sites</b>	34 single site(s)
<b>No. of Accessible sites</b>	None

**Amenities**

<b>Drinking water</b>	
-----------------------	--